



INSTALLATION INSTRUCTION OF WALL PANELS

Thank you for choosing our Wall Panels.
We created them with the aim that everyone can install them themselves.
That is why for the production we have used lightweight and easy to handle material.
We supply our products ready-to-install.
This saves your precious time and provide to gain amazing final results.

We offer many models of wall panels. They differ from each other in size and shape, but the installation process is carried out in a similar way. In this instruction, we present installation of Cubic model. If there are any minor differences in the process, we will specify them.

Informations about the walls:

The wall on which panels are to be installed must meet following criteria:

- Must be dry. Moisture impedes the bond of glue,
- It must be straight. If the wall is concave, convex or has local "hills", it will be difficult to install the panels to each other correctly,
- Must be consistent. Layers of walls (gypsum, plaster, paint) must have the correct adhesion to each other.

We do not recommend installation of our panels in places as listed below:

Kitchen:

- In close proximity to the gas burner,

Bathroom:

- Inside the shower,

Living room:

- Over the door of the fireplace.

Let's start !

1. At the beginning: what You will need to install?



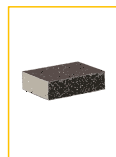
Pistolet



Klej



Piła



Papier ścierny



Miarka



Nożyk



Poziomica



Ołówek

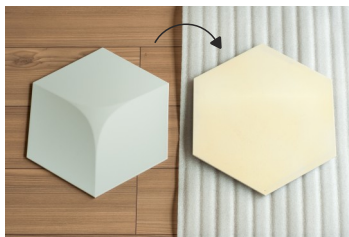
The panels have reached You in different ways - brought them a courier or You have collected them personally. During the way, panels were kept in different rooms, cars etc. Each prevailed other conditions - temperature and humidity. Let the panels acclimatize to the conditions in Your apartment. Here they will spend a large part of their life.

Remember!

The material of which we have made Your panels has a thermal expansion higher than most building materials. This means that if in Your room the temperature will increase, Panels increase their dimensions greater than, for example walls. That is why it is very important to install panels at room temperature (20-22stC).

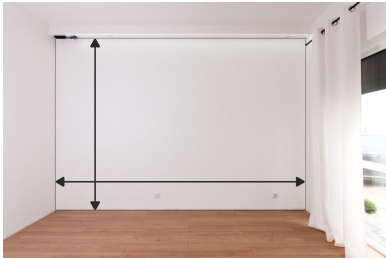
2. Unpacking

Carefully remove the panels from the box. Avoid storing the panels directly one on another. If the sand or dust will get in between them, they can scratch.



3. Measurements

Choose the placement of the panels on the wall, that suits You best.
If You are installing panels on custom wall, it is recommended to plan layout of panels on paper previously.
If Your case is extremely difficult and You feel that you will not be able to deal with it, write to us.
Surely we help You!



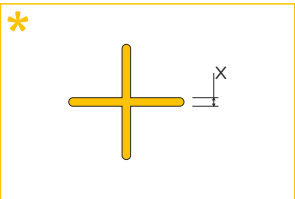
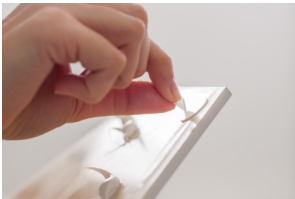
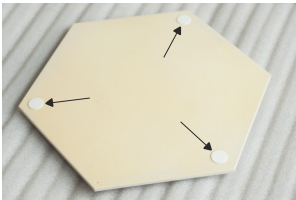
4. We begin installation!

Draw a vertical line on the wall, in the middle of the planned layout of panels using a spirit level and a pencil. This is the most important line for the whole installation, so try to draw it as accurately as possible.
Place the controlling and the first panel to the wall. If everything fits, glue round mounting tapes (included in the set) in the corners of the back wall of panel, they will hold panels during the setting time of the glue.

Then apply spots of glue in several places. Distance between them should be approx. 8-10cm.

Such prepared panel, apply gently to the wall at the same time trying to set the panel as closely as possible to the vertical line. If you are sure that the panel is in place, press it to the wall so that the round mounting tapes will come into contact with the wall surface.
Prepare the next panel in the same way as the first one and using the same methodology, stick to the wall keeping the gap between the panels as showed on the table below.

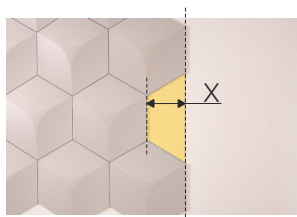
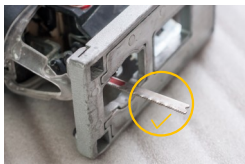
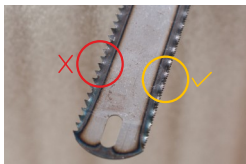
Firstly, try to install all of the "whole" panels. Later start to cut these pieces, which require it.



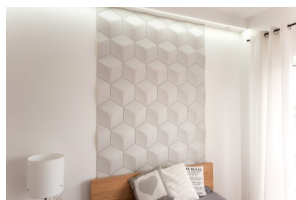
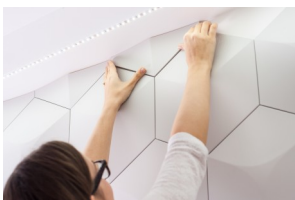
Model	X [mm]
Diamonds	-
Kite	-
Cubic	>1
Hexagon	>1
Sandglass	>1,5
Bamboo	>1,5

5. Cutting

Measure and designate a line along which the panel has to be cut.
Put it on a soft surface (blanket, foam PU, foam pad) upside down.
Mark the cutting line.
Using a saw or fretsaw with fine blade teeth, cut the panel.



Try to keep the cutting direction from the front to the back side of the panel. Thanks to this You will avoid jagged edges. After cutting, fit the panel to the place where it's supposed to be located. If it fits, glue it in the same way as the previous panels.
If it requires amendments, use sandpaper of weight 80, glued to a wooden board.



6. ***Strip montage.** If You use a finishing strip, follow the instructions supplied with the strip.

7. **Cleaning.** After the installation of panels remove traces of dust and fingerprints, arising during installation by using wet microfiber cloth.



Remember!

We are always glad to help - if you have any questions please write to us: info@kalithea.pl
or call us: **+48 65 521 23 80**